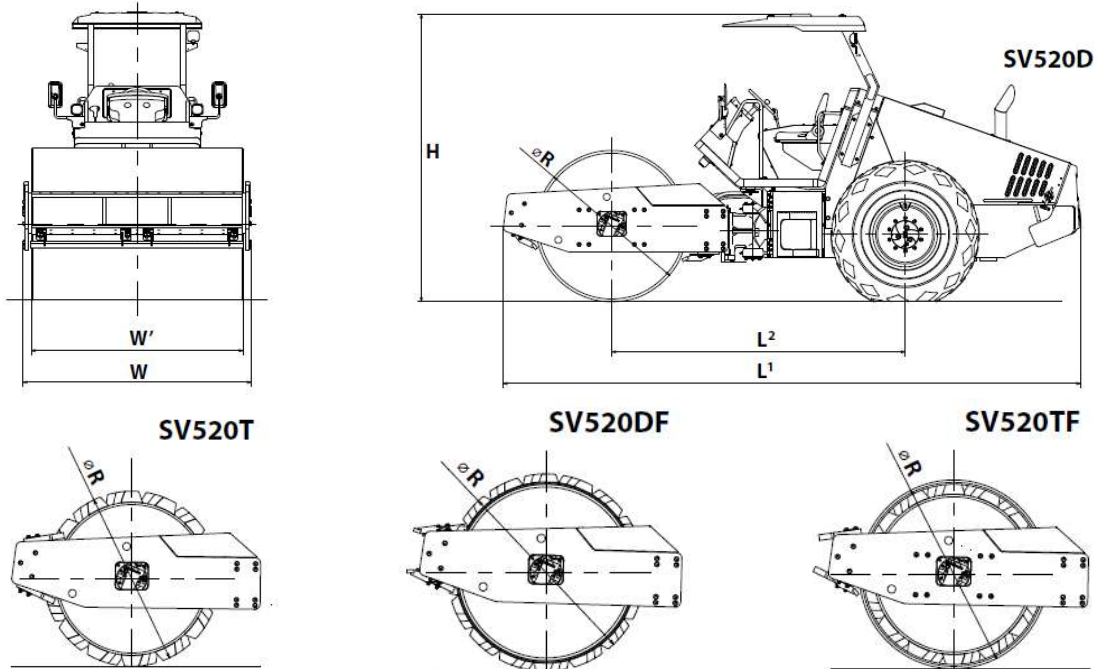


ROLLER

SV520



BRAND			SAKAI			
Type			Vibratory Single Drum Roller			
Model			SV520D	SV520T	SV520DF	SV520TF
Chassis Model			2SV31			
WEIGHTS	Operating weight (with Awning)	Kg	10,100	10,530	11,840	12,810
	Load on front axle (operating weight with Awning)	Kg	5,400	5,790	7,140	8,080
	Load on rear axle (operating weight with Awning)	kg	4,700	4,740	4,700	4,730
PERFORMANCE	Centrifugal force (L/H)	kN	172/255			
	Frequency(L/H)	Hz	33.3/28.3			
	Amplitude(L/H)	mm	1.02/2.09	0.95/1.94	0.73/1.50	0.62/1.27
	Dynamic linear pressure for front drum (operating weight with Awning) [L/H]	N/cm	1,056/1,446	1,074/1,464	1,136/1,526	1,179/1,569
	No. of speeds		2			
	Speed range (L/H)	Km/h	0-6/0-10			
	Gradability	% (°)	62 (32)		53 (28)	49(26)
Min. turn radius (outer)	m	5.6				
DIMENSIONS	Overall length L1	mm	5,840			
	Overall width W	mm	2,295			
	Overall height (without Awning)	mm	2,190	2,175	2,195	2,180
	Overall height (with Awning) H	mm	2,910	2,925	2,945	2,935
	Wheelbase L2	mm	2,970			

PWM MACHINERY(THAILAND) CO., LTD Head office
 18/290 M007 Bangna-Trad Km.16 Rd.
 Bangchalong, Bangphli, Samutprakarn 10540

Chonburi branch
 555/2 Moo 10 Nong kham Sub District,
 Siracha District, Chonburi Province 20110

	Compaction width W'	mm	2,130			
	Drum width W' / Drum diameter R	mm	2,130/1,530	2,130/1,600	2,130/1,708	2,130/1,650
	Pad height	mm	-	100	75	100
	No. of pads	pcs.	-	140	160	140
	Shell thickness	mm	25	22	25	22
	Tire size x No. of tires		23.1-26-8 PR (OR) x2			
	Inflation (each wheels)	kPa	137			
	Ground clearance	mm	405		390	400
	Curb clearance	mm	500	520	555	535
	Side clearance	mm	82.5			
ENGINE	Make		ISUZU			
	Model		4BG1T			
	Type		Diesel, water cooled, 4 cycle, 4 cylinder, with turbo charger			
	Displacement	L	4,329			
	Rated output	kW	83.3			
	Electric system battery	V	24			
POWER LINE	Electric system alternator	V/A	24/50			
	Transmission		Hydrostatic transmission			
	Type		Hydraulic			
VIBRATION SYSTEM	Drive wheel		All Wheel			
	Drive		Hydraulic			
	No. of amplitude		2			
BRAKE SYSTEM	Vibrator		Eccentric shaft type			
	Service (working)		Hydrostatic dynamic brake through drive system/FNR Level			
	Secondary (emergency)		Hydrostatic + Spring - applied hydraulically released (SAHR) / Brake pedal			
STEERING SYSTEM	Parking (parking)		SAHR/Panel button			
	Type		Hydraulic type (Articulated)			
FLUID CAPACITY	Articulation/Oscillation	± (°)	37/9.0			
	Fuel tank	L	265			
	Hydraulic tank	L	50			