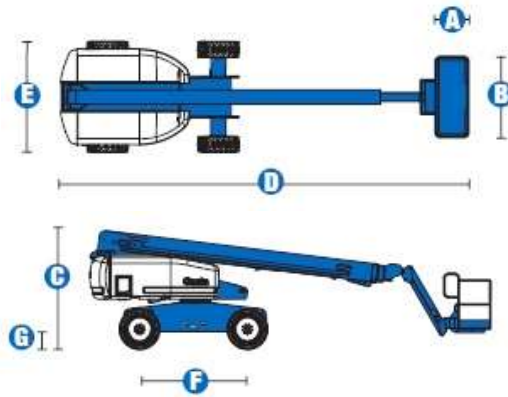
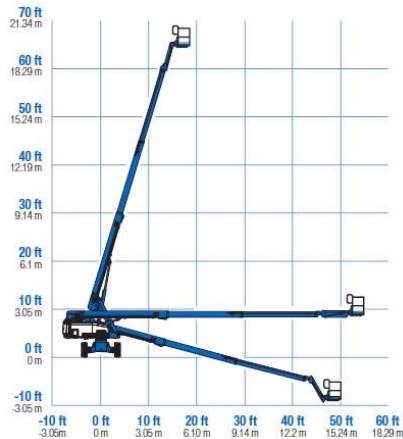


# Self-Propelled Articulating Booms

## S™-65

**RANGE OF MOTION S™-65**



Brand Model	Genie S-65	
Working height maximum	21.80 m	
Platform height maximum	19.80 m	
Horizontal reach maximum	17.10 m	
Below ground reach	2.71 m	
A   Platform length - 8 ft / 6 ft model	0.91 m	0.76 m
B   Platform width - 8 ft / 6 ft model	2.44 m	1.83 m
C   Height - stowed	2.72 m	
D   Length - stowed	9.50 m	
Length - transport (jib tucked under)	7.60 m	
E   Width (with standard tires)	2.50 m	
F   Wheelbase	2.50 m	
G   Ground clearance - center	.37 m	
Weight 2WD/4WD	10,024 kg	10,102 kg

Productivity		
Lift capacity	227 kg	
Platform rotation	160°	
Turntable rotation	360° continuous	
Turntable tailswing	1.22 m	
Drive speed – 2WD/4WD stowed	6.4 km/h	4.8 km/h
Drive speed - raised or extended	1.1 km/h	
Gradeability – 2WD/4WD - stowed	30%	45%
Turning radius - inside	2.36 m	
Turning radius - outside	5.72 m	
Controls	12 V DC proportional	
Tires - RT Lug	355/55D 625	

Power		
Power Source	Deutz F3L-2011 3cylinder diesel 48 hp (35.8 kW)	Perkins 404C-22 4cylinder diesel 51 hp (38 kW)
	Ford DSG-423 4cylinder gas/LPG 75 hp (56 kW)	
Auxiliary power unit	12 V DC	
Hydraulic tank capacity	170 L	
Fuel tank capacity	76 L	